

GOVERNMENT OF MAHARASHTRA

DETAILED ESTIMATE

Detailed Estimate for the Work of

Construction of Vegetable Storage /Sorting  
/Grading for Parashara Krishi Farmer Producer  
Company Ltd. at Tq. Phulambri, Dist.  
Aurangabad.

Estimated Cost Rs. 49,92,915.00

Name of Work :- Construction of Vegitable Storage /Sorting /Grading for  
Parashara Krishi Farmer Producer Company Ltd. at Tq. Phulambri, Dist.  
Aurangabad.

## Index

Sr.No.	Particulars	Page From	Page To
1	Fund Head Sheet		
2	General Report		
3	Recapitulation Sheet		
4	Abstract		
5	Measurements		
12	Rate Analysis		
13	Lead Chart		
14	Quarry Chart		
15	Trial pit		
16	Working Drawing		

Name of Work :- Construction of Vegetable Storage /Sorting /Grading for Parashara  
Krishi Farmer Producer Company Ltd. at Tq. Phulambri, Dist. Aurangabad.

## Fund Head Sheet

OFFICE JV STRUCTURAL ENGINEERS AND  
CONSULTANT AURANGABAD

SANCTIONED ESTIMATE NO.

FUND HEAD

MAJOR HEAD

MINOR HEAD

SERVICE HEAD :

DEPARTMENTAL HEAD :

Estimate framed for the probable expenses that will be incurred for the work of  
**Construction of Vegetable Storage /Sorting /Grading for Parashara Krishi  
Farmer Producer Company Ltd. at Tq. Phulambri, Dist. Aurangabad.**

Total Cost of work : 49,92,915.00

Administratively approved under  
No.

Estimate prepared by :

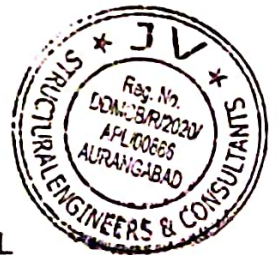
Estimate Checked by :

*GENERAL REPORT*

.....Attached Separately.....

*[Handwritten Signature]*

JV STRUCTURAL  
ENGINEERS AND CONSULTANT  
AURANGABAD



Name of Work :- Construction of Vegetable Storage /Sorting /Grading for Parashara Krishi Farmer Producer Company Ltd. at Tq. Phulambri, Dist. Aurangabad.

## General Report

1. Name of work :- Construction of Vegetable Storage /Sorting /Grading for Parashara Krishi Farmer Producer Company Ltd. at Tq. Phulambri, Dist. Aurangabad.

Following provisions are made in the estimate.

- 1) RCC framed structure with open foundation.
- 2) Providing soling using 80 mm size Below Flooring Only
- 3) Providing and laying P.C.C. M-10 For Flooring & M15 For Footing, Coping
- 4) Providing and laying R.C.C. M-20 For Footing, Column, Beams.
- 5) Providing Second Class Burnt Brick Masonry for All External Walls. Up to Plinth
- 6) Providing External Sand faced plaster.
- 7) Providing and applying 3 Coats Water Proofing Cement paint For External Side
- 8) Providing and fixing rolling shutter.
- 9) Providing and fixing crimped with G.I. mesh and size 20 mm x 20mm 10 guage to iron angle frame including periphery of Shed & Storage Unit
- 10) Providing and fixing colour coated Zinacalume ( R ) AZ150 ( min 150 gms/sq.mt. total on each side profiled sheets over Truss.

The rates are adopted as per State -E- SSR 2022-23 and nearest quarry is adopted for material.

So early technical sanction to the estimate is requested please.



JV STRUCTURAL  
ENGINEERS AND CONSULTANT  
AURANGABAD

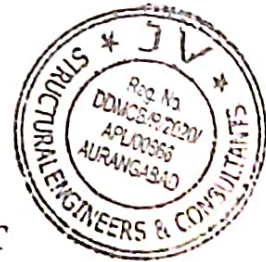


Name of Work :- Construction of Vegetable Storage /Sorting /Grading for  
Parashara Krishi Farmer Producer Company Ltd. at Tq. Phulambri, Dist.

Aurangabad  
**Recapitulation Sheet**

Sr. No.	Perticulars	Amount As per Estimate
<b>A</b>		
1	Cost of Onion Shed ( 18.28m x 21.93m )	44,13,355.00
2	Cost of Royalty Charges	23,750.00
3	Cost of Quality Control Charges	4,140.00
<b>Total (A)</b>		<b>Rs. 44,41,245.00</b>
4	Add 12% for G.S.T. Charges (on-1)	5,29,603.00
5	Add 0.5% for Labour Insurance Charges (on-1)	22,067.00
<b>Total Cost of Construction</b>		<b>49,92,915.00</b>
<b>Say in Lakh = 49.93</b>		

**JV STRUCTURAL  
ENGINEERS AND CONSULTANT  
AURANGABAD**



Name of Work :- Construction of Vegetable Storage /Sorting /Grading for Parashara Krishi Farmer Producer Company Ltd. at Tq. Phulambri, Dist. Aurangabad.

Abstract Sheet

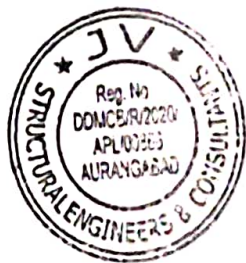
Item No.	Item Of Work.	Qty.	Rate	Unit	Amount
1	<p><b>Excavation</b> Excavation for foundation in earth, soil of all types, sand, gravel and soft murum, including removing the excavated material up to a distance of 50 m. beyond the building area and stacking and spreading as directed, dewatering, preparing the bed for the foundation and necessary back filling, ramming, watering including shoring and strutting etc. complete. (Lift upto 1.5 m.) By Mechanical Means. Bd.A.1 Page 1 Number 259. SSR I.No. 21.02, Sr.No.721, P.No.153</p>	122.170	207.00	Cum	25289.00
2	<p>Filling in plinth and floors with contractors material/brought from outside and approved by Engineer incharge in layers of 15 cm to 20 cm including watering and compaction etc. complete.. Spec. No. Bd.A.11 Page 1 Number 263. SSR I.No. 21.37, Sr.No. 751, P.No. 157</p>	109.860	818.98	Cum	89973.00
3	<p>Providing soling using 80 mm size trap metal in 15 cm. layer including filling voids with Crushed sand/grit, ramming, watering etc. complete.. Spec. No. As directed by Engineer in charge. SSR I.No. 21.40, Sr.No. 754, P.No. 157</p>	60.130	2048.34	Cum	123167.00
4	<p><b>Plain Cement Concrete</b> Providing and laying Cast in situ/Ready Mix cement concrete in M-10 of trap/ granite/ quartzite/ gneiss metal for foundation and bedding including bailing out water, Steel centering, formwork, laying/pumping, compacting, roughening them if special finish is to be provided, finishing if required and curing complete, with fully automatic micro processor based PLC with SCADA enabled reversible Drum Type mixer/concrete Batch mix plant (Pan mixer) etc. complete. With fine aggregate (Crushed sand VSI Grade) Spec. No. Bd.E.1 Page 1 No. 287.SSR I.No.24.01, Sr.No.827, P.No.175</p>	41.690	6430.83	Cum	268101.00


em	Item Of Work.	Qty.	Rate	Unit	Amount
5	<p>Providing and laying Cast in situ/Ready Mix cement concrete in M15 of trap/ granite/quartzite/gneiss metal for <u>bed blocks, foundation blocks and such other items including bailing out water, Steel centering, formwork, laying/ pumping, compacting, roughening them if special finish is to be provided, finishing uneven and honeycombed surface and curing etc. complete. The Cement Mortar 1:3 plaster is considered for rendering uneven and honeycombed surface only. Newly laid concrete shall be covered by gunny bag, plastic, tarpaulin etc. (Wooden centering will not be allowed.), with fully automatic micro processor based PLC with SCADA enabled reversible Drum Type mixer/ concrete Batch mix plant (Pan mixer) etc. complete. With fine aggregate (Crushed sand VSI Grade) Sepc. No. Bd.E.4 Page Number 289 and B7, Page Number 38. SSR I.No. 24.08, Sr.No. 830, P.176</u></p>	11.230	6940.39	Cum	77941.00
6	<p>Providing and laying in situ /Ready Mix cement concrete M-20 of trap / granite /quartzite/ gneiss metal for <u>R.C.C. work in foundations like raft, strip foundations, grillage and footings of R.C.C. columns and steel stanchions etc. including bailing out water, Steel centering formwork, laying/pumping cover blocks, compaction and curing roughening the surface if special finish is to be provided (Excluding reinforcement and structural steel) etc. complete, with fully automatic micro processor based PLC with SCADA enabled reversible Drum Type mixer/ concrete Batch mix plant (Pan mixer) etc. complete. With fine aggregate (Crushed sand VSI Grade) Spec. No.Bd.F.3 Page 1 No. 298 and B.7, Page No.38. SSR I.No.25.11, Sr.No.836 P.No.178</u></p>	31.020	7679.42	Cum	238216.00
7	<p>Providing and laying Cast in situ/Ready Mix cement concrete M-20 of trap / granite /quartzite/ gneiss metal for <u>R.C.C. columns as per detailed designs and drawing or as directed including steel centering, formwork, cover blocks, laying/pumping, compaction finishing the formed surfaces with cement mortar 1:3 of sufficient minimum thickness to give a smooth and even surface or roughening if special finish is to be provided and curing etc. complete.(Excluding reinforcement and structural steel).with fully automatic micro processor based PLC with SCADA enabled reversible Drum Type mixer/ concrete Batch mix plant (Pan mixer) etc. complete. With fine aggregate (Crushed sand VSI Grade) Spec. No. : Bd.F.5 Page No. 300 and B.7, Page.No. 38.SSR I.No.25.31, Sr.No.841, P.No.179</u></p>	7.070	14358.42	Cum	101514.00

Item No.	Item Of Work.	Qty.	Rate	Unit	Amount
8	Providing and laying Cast in situ/Ready Mix cement concrete M-20 of trap / granite /quartzite/ gneiss metal for <u>R.C.C. beams and lintels</u> as per detailed designs and drawings or as directed including steel centering, formwork, cover blocks, laying/pumping, compaction and roughening the surface if special finish is to be provided and curing etc. complete. (Excluding reinforcement and structural steel). with fully automatic micro processor based PLC with SCADA enabled reversible Drum Type mixer/ concrete Batch mix plant (Pan mixer) etc. complete. With fine aggregate (Crushed sand VSI Grade) Spec. No. :Bd.F.6 Page Number 300 and B.7, Page 1 Number 38 Page.No. 38.SSR I.No.25.50, Sr.No.846, P.No.181	9.900	12844.42	Cum	127160.00
9	Providing and fixing in position TMT - FE - 500 bar reinforcement of various diameters for <u>R.C.C. pile caps, footings, foundations, slabs, beams columns, canopies, staircase, newels, chajjas, lintels pardis, copings, fins, arches</u> etc. as per detailed designs, drawings and schedules. including cutting, bending, hooking the bars, binding with wires or tack welding and supporting as required complete.. Spec.No. Bd.F.17, Page 1 No. 306. SSR I.No.26.33, Sr.No.871, P.No.188	3.170	89838.46	MT	284788.00
10	Providing structural <u>steel work in trusses</u> , other similar trussed purlins and members with <u>all bracing, gusset plates</u> etc. as per detailed designs and drawings or as directed including cutting, fabricating, hoisting, erecting fixing in position, Making riveted/ bolted/ welded connection and one coat of anticorrosive paint and over it 2 coats of oil painting approved quality and shade etc. complete.Spec.No. Bd.C.8 Page Number 278 SSR I.No.23.04, Sr.No.819, P.No.173	6.710	119594.46	MT	802479.00
11	Providing and fabricating <u>structural steel work in rolled sections like joists, channels, angles, tees</u> etc. as per detailed design and drawings or as directed including cutting, fabricating, hoisting, erecting, fixing in position making riveted / bolted /welded connections without connecting plates, braces etc. and including one coat of anticorrosive paint and over it two coats of oil painting of approved quality and shade etc. complete.. Spec. No. Bd.C.2 Page 1 Number 275 SSR I.No.23.01, Sr.No.816, P.No.173	9.300	101979.46	MT	948409.00
<b>Brick Work</b>					
12	Providing <u>second class Burnt Brick masonry</u> with conventional/ I.S. type bricks in cement mortar 1:6 in <u>foundations and plinth of inner walls/ in plinth external walls including bailing out water manually</u> , striking joints on unexposed faces, raking out joints on exposed faces and watering etc. Complete. Spec. No. As director by engineer in charge and BDG- 2 and 5. SSR I.No.27.01, Sr.No.889 P.No.197	5.350	8452.90	Cum	45223.00

Item No.	Item Of Work.	Qty.	Rate	Unit	Amount
13	<b>Plastering &amp; Pointing</b> Providing sand faced plaster externally in cement mortar using approved screened sand, in all positions including base coat of 15 mm thick in cement mortar 1:4 using waterproofing compound at 1Kilogramper cement bag curing the same for not less than 2 days and keeping the surface of the base coat rough to receive the sand faced treatment 6 to 8 mm thick in cement mortar 1:4 finishing the surface by taking out grains and curing for fourteen days scaffolding etc.complete. Spec. No. : Bd.L.7 Page 1 No. 369. SSR I.No.32.11, Sr.No.963, P.No.209	59.220 ✓	652.53	Sqm	38643.00
14	<b>Oil Painting</b> Providing and applying three coats of water proof cement paint of approved manufacture and of approved colour to new plastered surfaces including scaffolding if necessary, cleaning and preparing the surface, watering for two days etc. complete. Spec. No. : As directed by Engineer in charge. SSR I.No.35.15, Sr.No.1085, P.no.224	59.220 ✓	104.00	Sqm	6159.00 *
15	Providing and <u>applying two coats of synthetic enamel paint</u> of approved colour to new /old structural steel work and wood work in buildings, including scaffolding if necessary, cleaning and preparing the surface (excluding primer coat) etc. complete. Spec. No. Bd.0.5 Page 1 No. 405..SSR I.No.35.07, Sr.No.1077 P.No.227	10.940 ✓	96.00	Sqm	1050.00
16	Providing and <u>fixing rolling shutter fabricated from steel laths of minimum thickness 0.9 mm with lock plate of 3.15 mm thickness reinforced with 35 x 35 x 5 mm angle section fitted with sliding bolts and handles for both sides, deep M.S. channel section of depth and thickness not less than 65 mm and 3.15 mm respectively with hold fast arrangements, M.S. Bracket plate 300 x 300 x 3.15 mm minimum size and shape with square bar, suspension shaft of minimum 32 mm diameter, hood cover of M.S. sheet not less than 0.9 mm thickness and of any size at top and safety devices including mechanical gear operation arrangement consisting of worm gear wheels and worms of high grade cast iron or mild steel and one coat of red lead primer etc. complete. (I.S. 62481979) (With mechanical gear) Spec.No.: BD.V 5 page 551 and as directed by Engineer in charge. SSR I.No.39.25, Sr.No.1218, P.No.249</u>	10.940 ✓	5443.46	Sqm	59551.00
17	Providing and fixing <u>crimped with G.I. mesh and size 20 mm x 20mm 10 guage to iron angle frame including welding crimp mesh to angle frame and steel flat, fixing the frame in its original position and oil painting etc.complete ( excluding cost of structural steel) Spec.No.: As directed by Engineer in charge. SSR I.No.44.21, Sr.No.1536, P.No.295</u>	1047.620 ✓	769.00	Sqm	805620.00

Item No.	Item Of Work.	Qty.	Rate	Unit	Amount
18	Providing and fixing <u>corrugated galvanised iron sheets of 0.63mm thick (24 B.W.G.) for roofing without wind tiles including fastening with galvanised iron screws and bolts, lead and bitumen washers as per drawing etc. complete.</u> (Weight of 5.5 Kilogram/sq.m.). Spec.No.: Bd.R.5, Page One Number 453. SSR I.No.38.04, Sr.No.1144, P.No.233	425.370	870.00	Sqm	370072.00
<b>Total Cost Of Proper Building (A)</b>					<b>= 4413355.0</b>
19	Royalty Charges-as per statement attached				
	For Sand	0.000	237.37	Cum	0.00
	For Murum	109.860	216.18	Cum	23750.00
<b>Total Cost Of Royalty Charges (B)</b>					<b>= 23750.0</b>
<b>Quality Control Charges Items.</b>					
<b>2) Fine Aggregates</b>					
20	Carrying out basic tests on Sand for Fineness modulus,Silt and clay content.Spec.No.As directed by Engineer in Charge.SSR I.No.11 P.No.360	2.000	1380.00	/ Test	2760.00
<b>4) Basic Test of Concrete</b>					
21	Carrying out basic tests on Concrete cubes for compressive strength.Spec.No.As directed by Engineer in Charge.SSR I.No.20 P.No.387	2.000	690.00	/ Test	1380.00
<b>Total Cost Of Quality Control Charges (C)</b>					<b>= 4140.0</b>
<b>Total Cost Of Project (A+B+C)</b>					<b>= 4441245.0</b>



  
**JV STRUCTURAL  
ENGINEERS AND CONSULTANT  
AURANGABAD**

Name of Work :- Construction of Vegetable Storage /Sorting /Grading for Parashara Krishi Farmer  
Producer Company Ltd. at Tq. Phulambri, Dist. Aurangabad.

Measurement Sheet

Item No.	Item Of Work.	Nos.	Length.	Breadth.	Height.	Quantity.	Unit.
	<b>I. Excavation</b>						
1	Excavation for foundation in earth, soil of all types, sand, gravel and soft murum, including removing the excavated material up to a distance of 50 m. beyond the building area and stacking and spreading as directed, dewatering, preparing the bed for the foundation and necessary back filling, ramming, watering including shoring and strutting etc. complete. (Lift upto 1.5 m.) By Mechanical Means. Bd.A.1 Page 1 Number 259. SSR I.No. 21.02, Sr.No.721, P.No.153						
	<b>Ground Floor</b>						
	Total Footings (16 Nos)						
	Group no.1	16	2.600	1.800	1.500	112.320	
	<b>External Ground beam</b>						
	1-5	1	3.923	0.430	0.300	0.510	
	5-7	1	3.931	0.430	0.300	0.510	
	7-9	1	3.931	0.430	0.300	0.510	
	9-11	1	3.931	0.430	0.300	0.510	
	11-13	1	3.931	0.430	0.300	0.510	
	4-6	1	3.923	0.430	0.300	0.510	
	6-8	1	3.931	0.430	0.300	0.510	
	8-10	1	3.931	0.430	0.300	0.510	
	10-12	1	3.931	0.430	0.300	0.510	
	12-14	1	3.931	0.430	0.300	0.510	
	1-2	1	5.680	0.430	0.300	0.730	
	2-3	1	5.427	0.430	0.300	0.700	
	3-4	1	5.680	0.430	0.300	0.730	
	17-18	1	5.680	0.430	0.300	0.730	
	18-19	1	5.427	0.430	0.300	0.700	
	19-20	1	5.680	0.430	0.300	0.730	
	For Ramp	2	2.570	0.830	0.100	0.430	
	<b>Net Qty. For Ground Floor</b>					<b>122.170</b>	<b>Cum</b>
2	Filling in plinth and floors with contractors material/brought from outside and approved by Engineer incharge in layers of 15 cm to 20 cm including watering and compaction etc. complete.. Spec. No. Bd.A.11 Page 1 Number 263. SSR I.No. 21.37, Sr.No. 751, P.No. 157						
	<b>Ground Floor</b>						
	Total Footings (16 Nos.)						
	Group no.1	16	2.60	1.800	1.800	134.780	
	<b>Total Excavation Qty. (A) =</b>					<b>134.780</b>	<b>Cum</b>

Item No.	Item Of Work.	Nos.	Length.	Breadth.	Height.	Quantity.	Unit.
	<b>Deduction</b>						
	Qty as per - Excavation It.No.1	1	122.170	1.000	1.000	122.170	
	Qty as per - 1:2:4 PCC Below Footing	1	11.230	1.000	1.000	11.230	
	Qty as per - M-20 RCC footing	1	31.020	1.000	1.000	31.020	
	Qty as per - 20 RCC Col. upto GL	1	4.330	1.000	1.000	4.330	
	<b>Total Deduction Qty. (B) =</b>					<b>168.750</b>	<b>Cum</b>
	<b>Total Filling Required (A)-(B) =</b>					<b>-33.970</b>	<b>Cum</b>
	<b>Under flooring</b>						
	Ht = 0.6 - 0.1 - 0.15 = 0.35 m.						
	Below Flooring	1	18.280	21.930	0.350	140.310	
	For Ramp Filling Avg. 0.30m	1	4.567	2.570	0.300	3.520	
	<b>Net Qty. For Ground Floor</b>					<b>109.860</b>	<b>Cum</b>
3	Providing soling using 80 mm size trap metal in 15 cm. layer including filling voids with Crushed sand/grit, ramming, watering etc. complete.. Spec. No. As directed by Engineer in charge. SSR I.No. 21.40, Sr.No. 754, P.No. 157						
	<b>Ground Floor</b>						
	<b>Below Flooring</b>						
	For Onion Shed	1	18.280	21.930	0.150	60.130	
	<b>Net Qty. For Ground Floor</b>					<b>60.130</b>	<b>Cum</b>
	<b>3. Plain Cement Concrete</b>						
4	Providing and laying Cast in situ/Ready Mix cement concrete in M-10 of trap/ granite/ quartzite/ gneiss metal for foundation and bedding including bailing out water, Steel centering, formwork, laying/pumping, compacting, roughening them if special finish is to be provided, finishing if required and curing complete, with fully automatic micro processor based PLC with SCADA enabled reversible Drum Type mixer/concrete Batch mix plant (Pan mixer) etc. complete. With fine aggregate (Crushed sand VSI Grade) Spec. No. Bd.E.1 Page 1 No. 287.SSR I.No.24.01, Sr.No.827, P.No.175						
	<b>Ground Floor</b>						
	<b>Below Flooring</b>						
	For Onion Shed	1	18.280	21.930	0.100	40.088	
	Over Ramp	1	4.570	2.570	0.100	1.174	
	Below Ramp Walls	2	2.570	0.830	0.100	0.427	
	<b>Net Qty. For Ground Floor</b>					<b>41.690</b>	<b>Cum</b>

Item Of Work.	Nos.	Length.	Breadth.	Height.	Quantity.	Unit.
---------------	------	---------	----------	---------	-----------	-------

5 Providing and laying Cast in situ/Ready Mix cement concrete in M15 of trap/ granite/quartzite/gneiss metal for bed blocks, foundation blocks and such other items including bailing out water, Steel centering, formwork, laying/ pumping, compacting, roughening them if special finish is to be provided, finishing uneven and honeycombed surface and curing etc. complete. The Cement Mortar 1:3 plaster is considered for rendering uneven and honeycombed surface only. Newly laid concrete shall be covered by gunny bag, plastic, tarpaulin etc. (Wooden centering will not be allowed.), with fully automatic micro processor based PLC with SCADA enabled reversible Drum Type mixer/ concrete Batch mix plant (Pan mixer) etc. complete. With fine aggregate (Crushed sand VSI Grade) Sepc. No. Bd.E.4 Page Number 289 and B7, Page Number38. SSR I.No. 24.08, Sr.No. 830, P.176

Ground Floor						
Below Footing						
Group no.1	16	2.600	1.800	0.150	11.232	
<b>Net Qty. For Ground Floor</b>					<b>11.230</b>	<b>Cum</b>

6 **Reinforcement Cement Concrete**  
 Providing and laying in situ /Ready Mix cement concrete M-20 of trap / granite /quartzite/ gneiss metal for R.C.C. work in foundations like raft, strip foundations, grillage and footings of R.C.C. columns and steel stanchions etc. including bailing out water, Steel centering formwork, laying/pumping cover blocks, compaction and curing roughening the surface if special finish is to be provided (Excluding reinforcement and structural steel) etc. complete, with fully automatic micro processor based PLC with SCADA enabled reversible Drum Type mixer/ concrete Batch mix plant (Pan mixer) etc. complete. With fine aggregate (Crushed sand VSI Grade) Spec. No.Bd.F.3 Page 1 No. 298 and B.7, Page No.38. SSR I.No.25.11, Sr.No.836 P.No.178

Ground Floor						
Total Footings (16 Nos)						
First Step						
Group no.1	16	2.300	1.500	0.350	19.320	
Second Step						
Group no.1	16	1.900	1.100	0.350	11.700	
<b>Net Qty. For Ground Floor</b>					<b>31.020</b>	<b>Cum</b>

7 Providing and laying Cast in situ/Ready Mix cement concrete M-20 of trap / granite /quartzite/ gneiss metal for R.C.C. columns as per detailed designs and drawing or as directed including steel centering, formwork, cover blocks, laying/pumping, compaction finishing the formed surfaces with cement mortar 1:3 of sufficient minimum thickness to give a smooth and even surface or roughening if special finish is to be provided and curing etc. complete.(Excluding reinforcement and structural steel).with fully automatic micro processor based PLC with SCADA enabled reversible Drum Type mixer/ concrete Batch mix plant (Pan mixer) etc. complete. With fine aggregate (Crushed sand VSI Grade) Spec. No. Bd.F.5 Page No. 300 and B.7, Page.No. 38.SSR I.No.25.31, Sr.No.841, P.No.179

Ground Floor						
Column upto GL						
Group no.1	16	0.380	0.750	0.950	4.330	

Item Of Work.	Nos.	Length.	Breadth.	Height.	Quantity.	Unit.	
Column GL to FFL Ht. 0.60	16	0.380	0.750	0.600	2.740		
Group no.1					7.070	Cum	
<b>Net Qty. For Ground Floor</b>						<b>7.070</b>	<b>Cum</b>
Providing and laying Cast in situ/Ready Mix cement concrete M-20 of trap / granite /quartzite/ gneiss metal for R.C.C. beams and lintels as per detailed designs and drawings or as directed including steel centering, formwork, cover blocks, laying/pumping, compaction and roughening the surface if special finish is to be provided and curing etc. complete. (Excluding reinforcement and structural steel). with fully automatic micro processor based PLC with SCADA enabled reversible Drum Type mixer/concrete Batch mix plant (Pan mixer) etc. complete. With fine aggregate (Crushed sand VSI Grade) Spec. No. :Bd.F.6 Page Number 300 and B.7, Page 1 Number38 Page.No. 38.SSR I.No.25.50, Sr.No.846, P.No.181							
<b>Ground Floor</b>							
<b>External Plinth beam</b>							
<b>B1 - 230 X 450</b>							
1-5	1	3.923	0.230	0.450	0.410		
5-7	1	3.931	0.230	0.450	0.410		
7-9	1	3.931	0.230	0.450	0.410		
9-11	1	3.931	0.230	0.450	0.410		
11-13	1	3.931	0.230	0.450	0.410		
4-6	1	3.923	0.230	0.450	0.410		
6-8	1	3.931	0.230	0.450	0.410		
8-10	1	3.931	0.230	0.450	0.410		
10-12	1	3.931	0.230	0.450	0.410		
12-14	1	3.931	0.230	0.450	0.410		
<b>B2 (230 X 750)</b>							
1-2	1	5.680	0.230	0.750	0.980		
2-3	1	5.427	0.230	0.750	0.940		
3-4	1	5.680	0.230	0.750	0.980		
17-18	1	5.680	0.230	0.750	0.980		
18-19	1	5.427	0.230	0.750	0.940		
19-20	1	5.680	0.230	0.750	0.980		
<b>Net Qty. For Ground Floor</b>						<b>9.900</b>	<b>Cum</b>

Item No.	Item Of Work.	Nos.	Length.	Breadth.	Height.	Quantity.	Unit.
9	Providing and fixing in position TMT - FE - 500 bar reinforcement of various diameters for R.C.C. pile caps, footings, foundations, slabs, beams columns, canopies, staircase, newels, chajjas, lintels pardis, copings, fins, arches etc. as per detailed designs, drawings and schedules. including cutting, bending, hooking the bars, binding with wires or tack welding and supporting as required complete.. Spec.No. Bd.F.17, Page 1 No. 306. SSR I.No.26.33, Sr.No.871, P.No.188						
<b>Ground Floor</b>							
	Qty. As Per Item. M20 Footing		31.020	20.00		Kg/Cum	620.40
	Qty. As Per Item. M20 Column		7.070	150.00		Kg/Cum	1060.50
	Qty. As Per Item. M20 Beams		9.900	150.00		Kg/Cum	1485.00
						<b>Total Qty. =</b>	<b>3165.90 Kg.</b>
<b>Net Qty. For Ground Floor</b>							<b>3.170 M.T.</b>

10	Providing structural steel work in trusses, other similar trussed purlins and members with all bracing, gusset plates etc. as per detailed designs and drawings or as directed including cutting, fabricating, hoisting, erecting fixing in position, Making riveted/ bolted/ welded connection and one coat of anticorrosive paint and over it 2 coats of oil painting approved quality and shade etc. complete.Spec.No. Bd.C.8 Page Number 278 SSR I.No.23.04, Sr.No.819, P.No.173						
<b>Ground Floor</b>							
	For Onion Shed	1	18.740	22.39	16.000		6713.420
						<b>Total Qty. =</b>	<b>6713.42 Kg.</b>
<b>Net Qty. For Ground Floor</b>							<b>6.710 M.T.</b>

11	Providing and fabricating structural steel work in rolled sections like joists, channels, angles, tees etc. as per detailed design and drawings or as directed including cutting, fabricating, hoisting, erecting, fixing in position making riveted / bolted /welded connections without connecting plates, braces etc. and including one coat of anticorrosive paint and over it two coats of oil painting of approved quality and shade etc. complete.. Spec. No. Bd.C.2 Page 1 Number 275 SSR I.No.23.01, Sr.No.816, P.No.173						
<b>Ground Floor</b>							
	Steel Column 2ISMC 200 @ 44.20Kg/Mtr.	16	4.200	1.00	44.200		2970.240
	Below Truss Beams ISMC 200 @ 22.10Kg/M	14	4.011	1.00	22.100		1241.000
						<b>Total Qty.(A) =</b>	<b>4211.24 Kg.</b>
<b>For 1 Nos Storage Unit Squar Pipe 40mm x 40mm @ 3.27 kg/mt</b>							
	Vertical Square Pipe	12	2.200	1.00	3.270		86.330
	Front & Back Side	6	6.400	1.00	3.270		125.570
	Left & Right Side.	6	1.300	1.00	3.270		25.510
	Bottom	4	1.300	1.00	3.270		17.000
						<b>Total Qty.for 1 Nos Storage Unit =</b>	<b>254.41 Kg.</b>

Item No.	Item Of Work.	Nos.	Length.	Breadth.	Height.	Quantity.	Unit.
	For 20 Nos Storage Unit	20	254.410	-	-	5088.200	Kg.
						Net Total (B) = 5088.20	Kg.
						Total (A+B) = 9299.44	Kg.
<b>Net Qty. For Ground Floor</b>						<b>9.300</b>	<b>M.T.</b>

**12 Brick Work**  
 Providing second class Burnt Brick masonry with conventional/ I.S. type bricks in cement mortar 1:6 in foundations and plinth of inner walls/ in plinth external walls including bailing out water manually, striking joints on unexposed faces, raking out joints on exposed faces and watering etc. Complete. Spec. No. As directed by engineer in charge and BDG- 2 and 5. SSR I.No.27.01, Sr.No.889 P.No.197

<b>Ground Floor</b>							
External plinth beam (Plinth Ht = 1.00 - 0.15 - 0.15 = 0.70 m.)							
1-5	1	3.923	0.230	0.300	0.270		
5-7	1	3.931	0.230	0.300	0.270		
7-9	1	3.931	0.230	0.300	0.270		
9-11	1	3.931	0.230	0.300	0.270		
11-13	1	3.931	0.230	0.300	0.270		
4-6	1	3.923	0.230	0.300	0.270		
6-8	1	3.931	0.230	0.300	0.270		
8-10	1	3.931	0.230	0.300	0.270		
10-12	1	3.931	0.230	0.300	0.270		
12-14	1	3.931	0.230	0.300	0.270		
1-2	1	5.680	0.230	0.300	0.390		
2-3	1	5.427	0.230	0.300	0.370		
3-4	1	5.680	0.230	0.300	0.390		
17-18	1	5.680	0.230	0.300	0.390		
18-19	1	5.427	0.230	0.300	0.370		
19-20	1	5.680	0.230	0.300	0.390		
For Ramp Avg Ht 0.3m	2	2.570	0.230	0.300	0.350		
<b>Net Qty. For Ground Floor</b>						<b>5.350</b>	<b>Cum</b>

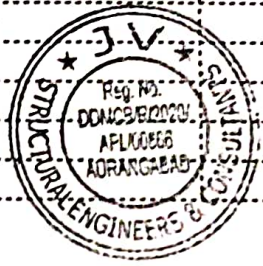
**13 Plastering & Pointing**  
 Providing sand faced plaster externally in cement mortar using approved screened sand, in all positions including base coat of 15 mm thick in cement mortar 1:4 using waterproofing compound at 1 Kilogram per cement bag curing the same for not less than 2 days and keeping the surface of the base coat rough to receive the sand faced treatment 6 to 8 mm thick in cement mortar 1:4 finishing the surface by taking out grains and curing for fourteen days scaffolding etc. complete. Spec. No. Bd.L.7 Page 1 No. 369. SSR I.No.32.11, Sr.No.963, P.No.209

<b>Ground Floor</b>							
External walls (Ht = 0.75+4.00 = 4.75 m.)							
Horizontal Side	2	18.740	-	0.600	22.490		
Vertical Side	2	22.390	-	0.600	26.870		

Item Of Work.	Nos.	Length.	Breadth.	Height.	Quantity.	Unit.
For Cloumn Offset	16	0.520	-	1.000	8.320	
For Ramp Wall	2	2.570	-	0.300	1.540	
<b>Net Qty. For Ground Floor</b>					<b>59.220</b>	<b>Sqm</b>
<b>Oil Painting</b>						
14 Providing and applying three coats of water proof cement paint of approved manufacture and of approved colour to new plastered surfaces including scaffolding if necessary, cleaning and preparing the surface, watering for two days etc. complete. Spec. No. : As directed by Engineer in charge. SSR I.No.35.15, Sr.No.1085, P.no.224						
<b>Ground Floor</b>						
Qty. (External Side Plaster)	1	59.22	1.000	-	59.220	
<b>Net Qty. For Ground Floor</b>					<b>59.220</b>	<b>Sqm</b>
15 Providing and applying two coats of synthetic enamel paint of approved colour to new /old structural steel work and wood work in buildings, including scaffolding if necessary, cleaning and preparing the surface (excluding primer coat) etc. complete. Spec. No. Bd.0.5 Page 1 No. 405..SSR I.No.35.07, Sr.No.1077 P.No.227						
<b>Ground Floor</b>						
Rolling Shutter	1	4.56	2.400	-	10.944	
<b>Net Qty. For Ground Floor</b>					<b>10.940</b>	<b>Sqm</b>
16 Providing and fixing rolling shutter fabricated from steel laths of minimum thickness 0.9 mm with lock plate of 3.15 mm thickness reinforced with 35 x 35 x 5 mm angle section fitted with sliding bolts and handles for both sides, deep M.S. channel section of depth and thickness not less than 65 mm and 3.15 mm respectively with hold fast arrangements, M.S. Bracket plate 300 x 300 x 3.15 mm minimum size and shape with square bar, suspension shaft of minimum 32 mm diameter, hood cover of M.S. sheet not less than 0.9 mm thickness and of any size at top and safety devices including mechanical gear operation arrangement consisting of worm gear wheels and worms of high grade cast iron or mild steel and one coat of red lead primer etc. complete. (I.S. 62481979) (With mechanical gear) Spec.No.: BD.V 5 page 551 and as directed by Engineer in charge. SSR I.No.39.25, Sr.No.1218, P.No.249						
<b>Ground Floor</b>						
Rolling Shutter	1	4.56	2.400	-	10.944	
<b>Net Qty. For Ground Floor</b>					<b>10.940</b>	<b>Sqm</b>
17 Providing and fixing crimped with G.I. mesh and size 20 mm x 20mm 10 guage to iron angle frame including welding crimp mesh to angle frame and steel flat, fixing the frame in its original position and oil painting etc.complete ( excluding cost of structural steel) Spec.No.: As directed by Engineer in charge. SSR I.No.44.21, Sr.No.1536, P.No.295						
<b>Ground Floor</b>						
Front & Back Side	2	18.28	-	4.200	153.552	
Left & Right Side	2	21.93	-	4.200	184.212	

Item Of Work.	Nos.	Length.	Breadth.	Height.	Quantity.	Unit.
Deduction Rolling Shutter	-1	4.56	-	2.400	-10.944	
					<b>Total (A) =</b>	<b>326.820 Sqm</b>
<b>For 1 nos Storage Unit</b>						
Bottom	1	1.30	6.400	-	8.320	
Front & Back Sides	2	6.40	-	1.800	23.040	
Left & Right Sides	2	1.30	-	1.800	4.680	
					<b>Total for 1 nos Storage =</b>	<b>36.040 Sqm</b>
<b>For 20 Nos Storage Unit</b>	20	36.04	-	-	720.800	
					<b>Total (B) =</b>	<b>720.800 Sqm</b>
<b>Net Qty. For Ground Floor</b>					<b>1047.620</b>	<b>Sqm</b>
8 Providing and fixing corrugated galvanised iron sheets of 0.63mm thick (24 B.W.G.) for roofing without wind tiles including fastening with galvanised iron screws and bolts, lead and bitumen washers as per drawing etc. complete.(Weight of 5.5 Kilogram/sq.m.). Spec.No.: Bd.R.5, Page One Number 453. SSR I.No.38.04, Sr.No.1144, P.No.233						
<b>Ground Floor</b>						
For Shed	1	18.880	22.530	-	425.370	
<b>Net Qty. For Ground Floor</b>					<b>425.370</b>	<b>Sqm</b>
19 Royalty Charges-as per statement attached						
For Sand	1	0.00	1.000	-	0.000	
For Murum	1	109.86	1.000	-	109.860	
<b>Quality Control Charges Items.</b>						
2) Fine Aggregates						
20 Carrying out basic tests on Sand for Fineness modulus,Silt and clay content.Spec.No.As directed by Engineer in Charge.SSR I.No.11 P.No.360						
	2	-	-	-	2.000	
<b>Net Qty. For Ground Floor</b>					<b>2.000</b>	<b>/Test</b>

Item No.	Item Of Work.	Nos.	Length.	Breadth.	Height.	Quantity.	Unit.
4)	Basic Test of Concrete						
21	Carrying out basic tests on Concrete cubes for compressive strength.Spec.No.As directed by Engineer in Charge.SSR I.No.20 P.No.387						
	Net Qty. For Ground Floor	2	-	-	-	2.000	/Test
						2.000	/Test



*[Handwritten Signature]*

**JV STRUCTURAL  
ENGINEERS AND CONSULTANT  
AURANGABAD**

Name of Work :- Construction of Vegetable Storage /Sorting /Grading for Parashara Krishi Farmer Producer Company Ltd. at Tq. Phulambri, Dist. Aurangabad.

Rate Analysis

It. No.	Item Of Work.	Unit.
<b>Excavation</b>		
1	Excavation for foundation in earth, soil of all types, sand, gravel and soft murum, including removing the excavated material up to a distance of 50 m. beyond the building area and stacking and spreading as directed, dewatering, preparing the bed for the foundation and necessary back filling, ramming, watering including shoring and strutting etc. complete. (Lift upto 1.5 m.) By Mechanical Means. Bd.A.1 Page 1 Number 259. SSR I.No. 21.02, Sr.No.721, P.No.153	
	Basic Rate As Per SSR 2022-23	Rs : 207.00
	<b>Net Amount For Ground Floor</b>	<b>207.000 /Cum</b>
<b>Filling in plinth and floors with contractors material/brought from outside and approved by Engineer incharge in layers of 15 cm to 20 cm including watering and compaction etc. complete.. Spec. No. Bd.A.11 Page 1 Number 263. SSR I.No. 21.37, Sr.No. 751, P.No. 157</b>		
2		
	Basic Rate As Per SSR 2022-23	Rs : 599.00
	Add Lead Charges For Hard Murum 1 1.00 219.98	Rs : 219.98
	<b>Net Amount For Ground Floor</b>	<b>818.980 /Cum</b>
<b>Providing soling using 80 mm size trap metal in 15 cm. layer including filling voids with Crushed sand/grit, ramming, watering etc. complete.. Spec. No. As directed by Engineer in charge. SSR I.No. 21.40, Sr.No. 754, P.No. 157</b>		
3		
	Basic Rate As Per SSR 2022-23	Rs : 1454.00
	Add Lead Charges For Metal 1 1.00 540.53	Rs : 540.53
	Add Lead Charges For Sand 1 0.15 358.73	Rs : 53.81
	<b>Net Amount For Ground Floor</b>	<b>2048.340 /Cum</b>
<b>Plain Cement Concrete</b>		
4	Providing and laying Cast in situ/Ready Mix cement concrete in M-10 of trap/ granite/ quartzite/ gneiss metal for foundation and bedding including bailing out water, Steel centering, formwork, laying/pumping, compacting, roughening them if special finish is to be provided, finishing if required and curing complete, with fully automatic micro processor based PLC with SCADA enabled reversible Drum Type mixer/concrete Batch mix plant (Pan mixer) etc. complete. With fine aggregate (Crushed sand VSI Grade) Spec. No. Bd.E.1 Page 1 No. 287.SSR I.No.24.01, Sr.No.827, P.No.175	
	Basic Rate As Per SSR 2022-23	Rs : 5830.00
	Add Lead Charges For 40mm Metal 1 0.70 423.41	Rs : 296.39
	Add Lead Charges For 20mm Metal 1 0.24 441.82	Rs : 106.04
	Add Lead Charges For Sand 1 0.47 358.73	Rs : 168.60
	Add Lead Charges For Cement 1 0.22 135.46	Rs : 29.80
	<b>Net Amount For Ground Floor</b>	<b>6430.830 /Cum</b>

- 5 Providing and laying Cast in situ/Ready Mix cement concrete in M15 of trap/ granite/quartzite/gneiss metal for bed blocks, foundation blocks and such other items including bailing out water, Steel centering, formwork, laying/ pumping, compacting, roughening them if special finish is to be provided, finishing uneven and honeycombed surface and curing etc. complete. The Cement Mortar 1:3 plaster is considered for rendering uneven and honeycombed surface only. Newly laid concrete shall be covered by gunny bag, plastic, tarpaulin etc. (Wooden centering will not be allowed.), with fully automatic micro processor based PLC with SCADA enabled reversible Drum Type mixer/ concrete Batch mix plant (Pan mixer) etc. complete. With fine aggregate (Crushed sand VSI Grade) Sepc. No. Bd.E.4 Page Number 289 and B7, Page Number 38. SSR I.No. 24.08, Sr.No. 830, P.176

Basic Rate As Per SSR 2022-23				Rs :	6359.00
Add Lead Charges For 40mm Metal	1	0.56	423.41	Rs :	237.11
Add Lead Charges For 20mm Metal	1	0.22	441.82	Rs :	97.20
Add Lead Charges For 10 / 12mm Metal	1	0.11	441.82	Rs :	48.60
Add Lead Charges For Sand	1	0.44	358.73	Rs :	157.84
Add Lead Charges For Cement	1	0.30	135.46	Rs :	40.64
<b>Net Amount For Ground Floor</b>					<b>6940.390 /Cum</b>

### Reinforcement Cement Concrete

- 6 Providing and laying in situ /Ready Mix cement concrete M-20 of trap / granite /quartzite/ gneiss metal for R.C.C. work in foundations like raft, strip foundations, grillage and footings of R.C.C. columns and steel stanchions etc. including bailing out water, Steel centering formwork, laying/pumping cover blocks, compaction and curing roughening the surface if special finish is to be provided (Excluding reinforcement and structural steel) etc. complete, with fully automatic micro processor based PLC with SCADA enabled reversible Drum Type mixer/ concrete Batch mix plant (Pan mixer) etc. complete. With fine aggregate (Crushed sand VSI Grade) Spec. No.Bd.F.3 Page 1 No. 298 and B.7, Page No.38. SSR I.No.25.11, Sr.No.836 P.No.178

Basic Rate As Per SSR 2022-23				Rs :	7104.00
Add Lead Charges For 20mm Metal	1	0.570	441.82	Rs :	251.84
Add Lead Charges For 10 / 12mm Metal	1	0.280	441.82	Rs :	123.71
Add Lead Charges For Sand	1	0.425	358.73	Rs :	152.46
Add Lead Charges For Cement	1	0.350	135.46	Rs :	47.41
<b>Net Amount For Ground Floor</b>					<b>7679.420 /Cum</b>

- 7 Providing and laying Cast in situ/Ready Mix cement concrete M-20 of trap / granite /quartzite/ gneiss metal for R.C.C. columns as per detailed designs and drawing or as directed including steel centering, formwork, cover blocks, laying/pumping, compaction finishing the formed surfaces with cement mortar 1:3 of sufficient minimum thickness to give a smooth and even surface or roughening if special finish is to be provided and curing etc. complete.(Excluding reinforcement and structural steel).with fully automatic micro processor based PLC with SCADA enabled reversible Drum Type mixer/ concrete Batch mix plant (Pan mixer) etc. complete. With fine aggregate (Crushed sand VSI Grade) Spec. No. : Bd.F.5 Page No. 300 and B.7, Page.No. 38.SSR I.No.25.31, Sr.No.841, P.No.179

Basic Rate As Per SSR 2022-23				Rs :	13783.00
Add Lead Charges For 20mm Metal	1	0.570	441.82	Rs :	251.84
Add Lead Charges For 10 / 12mm Metal	1	0.280	441.82	Rs :	123.71
Add Lead Charges For Sand	1	0.425	358.73	Rs :	152.46
Add Lead Charges For Cement	1	0.350	135.46	Rs :	47.41
<b>Net Amount For Ground Floor</b>					<b>14358.420 /Cum</b>

It. No. Item Of Work.

Unit.

- 8 Providing and laying Cast in situ/Ready Mix cement concrete M-20 of trap / granite /quartzite/ gneiss metal for R.C.C. beams and lintels as per detailed designs and drawings or as directed including steel centering, formwork, cover blocks, laying/pumping, compaction and roughening the surface if special finish is to be provided and curing etc. complete. (Excluding reinforcement and structural steel). with fully automatic micro processor based PLC with SCADA enabled reversible Drum Type mixer/concrete Batch mix plant (Pan mixer) etc. complete. With fine aggregate (Crushed sand VSI Grade) Spec. No. Bd.F.6 Page Number 300 and B.7, Page 1 Number 38 Page.No. 38.SSR I.No.25.50, Sr.No.846, P.No.181

Basic Rate As Per SSR 2022-23				Rs :	12269.00
Add Lead Charges For 20mm Metal	1	0.570	441.82	Rs :	251.84
Add Lead Charges For 10 / 12mm Metal	1	0.280	441.82	Rs :	123.71
Add Lead Charges For Sand	1	0.425	358.73	Rs :	152.46
Add Lead Charges For Cement	1	0.350	135.46	Rs :	47.41

**Net Amount For Ground Floor** **12844.420 /Cum**

- 9 Providing and fixing in position TMT - FE - 500 bar reinforcement of various diameters for R.C.C. pile caps, footings, foundations, slabs, beams columns, canopies, staircase, newels, chajjas, lintels, pargis, copings, fins, arches etc. as per detailed designs, drawings and schedules. including cutting, bending, hooking the bars, binding with wires or tack welding and supporting as required complete.. Spec.No. Bd.F.17, Page 1 No. 306. SSR I.No.26.33, Sr.No.871, P.No.188

Basic Rate As Per SSR 2022-23				Rs :	89703.00
Add Lead Charges For Steel	1	1.00	135.46	Rs :	135.46

**Net Amount For Ground Floor** **89838.460 /M.T.**

- 10 Providing structural steel work in trusses, other similar trussed purlins and members with all bracing, gusset plates etc. as per detailed designs and drawings or as directed including cutting, fabricating, hoisting, erecting fixing in position, Making riveted/ bolted/ welded connection and one coat of anticorrosive paint and over it 2 coats of oil painting approved quality and shade etc. complete.Spec.No. Bd.C.8 Page Number 278 SSR I.No.23.04, Sr.No.819, P.No.173

Basic Rate As Per SSR 2022-23				Rs :	119459.00
Add Lead Charges For Steel	1	1.00	135.46	Rs :	135.46

**Net Amount For Ground Floor** **119594.46 /M.T.**

- 11 Providing and fabricating structural steel work in rolled sections like joists, channels, angles, tees etc. as per detailed design and drawings or as directed including cutting, fabricating, hoisting, erecting, fixing in position making riveted / bolted /welded connections without connecting plates, braces etc. and including one coat of anticorrosive paint and over it two coats of oil painting of approved quality and shade etc. complete.. Spec. No. Bd.C.2 Page 1 Number 275 SSR I.No.23.01, Sr.No.816, P.No.173

Basic Rate As Per SSR 2022-23				Rs :	101844.00
Add Lead Charges For Steel	1	1.00	135.46	Rs :	135.46

**Net Amount For Ground Floor** **Rs : 101979.46 /M.T.**

Sl. No. Item Of Work.

Unit.

**Brick Work**

- 12 Providing second class Burnt Brick masonry with conventional/ I.S. type bricks in cement mortar 1:6 in foundations and plinth of inner walls/ in plinth external walls including bailing out water manually, striking joints on unexposed faces, raking out joints on exposed faces and watering etc. Complete. Spec. No. As directed by engineer in charge and BDG- 2 and 5. SSR I.No.27.01, Sr.No.889 P.No.197

Basic Rate As Per SSR 2022-23

Rs : 7755.00

Add Lead Charges For Brick

1 0.475 1205.060 Rs : 572.40

Add Lead Charges For Sand

1 0.320 358.730 Rs : 114.79

Add Lead Charges For Cement

1 0.079 135.460 Rs : 10.70

**Net Amount For Ground Floor**

**8452.900 /Cum**

**Plastering & Pointing**

- 13 Providing sand faced plaster externally in cement mortar using approved screened sand, in all positions including base coat of 15 mm thick in cement mortar 1:4 using waterproofing compound at 1 Kilogram per cement bag curing the same for not less than 2 days and keeping the surface of the base coat rough to receive the sand faced treatment 6 to 8 mm thick in cement mortar 1:4 finishing the surface by taking out grains and curing for fourteen days scaffolding etc. complete. Spec. No. : Bd.L.7 Page 1 No. 369. SSR I.No.32.11, Sr.No.963, P.No.209

Basic Rate As Per SSR 2022-23

Rs : 639.00

Add Lead Charges For Sand

1 0.033 358.730 Rs : 11.84

Add Lead Charges For Cement

1 0.0125 135.460 Rs : 1.69

**Net Amount For Ground Floor**

**652.530 /Sqm**

**Oil Painting**

- 14 Providing and applying three coats of water proof cement paint of approved manufacture and of approved colour to new plastered surfaces including scaffolding if necessary, cleaning and preparing the surface, watering for two days etc. complete. Spec. No. : As directed by Engineer in charge. SSR I.No.35.15, Sr.No.1085, P.no.224

Basic Rate As Per SSR 2022-23

Rs : 104.00

**Net Amount For Ground Floor**

**104.000 /Sqm**

- 15 Providing and applying two coats of synthetic enamel paint of approved colour to new /old structural steel work and wood work in buildings, including scaffolding if necessary, cleaning and preparing the surface (excluding primer coat) etc. complete. Spec. No. Bd.0.5 Page 1 No. 405..SSR I.No.35.07, Sr.No.1077 P.No.227

Basic Rate As Per SSR 2022-23

Rs : 96.00

**Net Amount For Ground Floor**

**96.000 /Sqm**

- 16 Providing and fixing rolling shutter fabricated from steel laths of minimum thickness 0.9 mm with lock plate of 3.15 mm thickness reinforced with 35 x 35 x 5 mm angle section fitted with sliding bolts and handles for both sides, deep M.S. channel section of depth and thickness not less than 65 mm and 3.15 mm respectively with hold fast arrangements, M.S. Bracket plate 300 x 300 x 3.15 mm minimum size and shape with square bar, suspension shaft of minimum 32 mm diameter, hood cover of M.S. sheet not less than 0.9 mm thickness and of any size at top and safety devices including mechanical gear operation arrangement consisting of worm gear wheels and worms of high grade cast iron or mild steel and one coat of red lead primer etc. complete. (I.S. 62481979) (With mechanical gear) Spec.No.: BD.V 5 page 551 and as directed by Engineer in charge. SSR I.No.39.25, Sr.No.1218, P.No.249

Basic Rate As Per SSR 2022-23

Rs : 5308.00

Add Lead Charges For Steel

1 1.00 135.46 Rs : 135.46

**Net Amount For Ground Floor**

**5443.460 /Sqm**

No. Item Of Work.	Unit.
-------------------	-------

7 Providing and fixing crimped with G.I. mesh and size 20 mm x 20mm 10 guage to iron angle frame including welding crimp mesh to angle frame and steel flat, fixing the frame in its original position and oil painting etc.complete ( excluding cost of structural steel) Spec.No.: As directed by Engineer in charge. SSR I.No.44.21, Sr.No.1536, P.No.295

Basic Rate As Per SSR 2022-23	Rs : 769.00	
<b>Net Amount For Ground Floor</b>	<b>769.000</b>	<b>/Sqm</b>

8 Providing and fixing corrugated galvanised iron sheets of 0.63mm thick (24 B.W.G.) for roofing without wind tiles including fastening with galvanised iron screws and bolts, lead and bitumen washers as per drawing etc. complete.(Weight of 5.5 Kilogram/sq.m.). Spec.No.: Bd.R.5, Page One Number 453. SSR I.No.38.04, Sr.No.1144, P.No.233

Basic Rate As Per SSR 2022-23	Rs : 870.00	
<b>Net Amount For Ground Floor</b>	<b>870.000</b>	<b>/Sqm</b>



*[Handwritten Signature]*

**JV STRUCTURAL  
ENGINEERS AND CONSULTANT  
AURANGABAD**

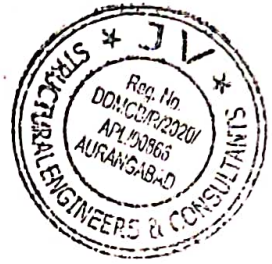
Name of Work :- Construction of Vegetable Storage /Sorting /Grading for Parashara Krishi Farmer Producer Company Ltd. at Tq. Phulambri, Dist. Aurangabad.

Testing Charges for Construction Materials.

Following out various following tests for

No.	Materials	Test	Qty.	Unit	Frequency Required	No.of Tests	Rate/Test	Total Amount
2	Sand	Fineness mod., Moisture content, Bulkage and silt factor	57.60	Cum	per source	2	1380.00	2760.00
3	Concrete cubes	Comp. strength of cubes,	89.68	Cum	1 - 5 Cum 1 Test 6 - 15 Cum 2 Test 16 - 30 Cum 3 Test 31 - 50 Cum 4 Test 50 & Above 4 Plus	2	690.00	1380.00
<b>Total Rs.</b>								<b>4140.00</b>

JV STRUCTURAL  
ENGINEERS AND CONSULTANT  
AURANGABAD



**Name of Work :- Construction of Vegetable Storage /Sorting /Grading for Parashara Krishi Farmer Producer Company Ltd. at Tq. Phulambri, Dist.**

**Royalty Statement For Court Building**

Item	ITEM OF WORK	UNIT	TOTAL QTY.	SAND		SM / HM	
				Cons. Rate	Qty.		
2	Filling in plinth and floors with contractors material brought from outside and approved by Engineer incharge in layers of 15 cm to	Cum	109.860	-	-	1.000	109.860
3	Providing soling using 80 mm size trap metal in 15 cm. layer including filling voids with Crushed sand / grit, ramming, watering	Cum	60.130	0.000	0.000	-	-
4	Providing and laying in situ / ready mix cement concrete of M10 proportion with trap/ granite/ quartzite/ gneiss metal in foundation including SSR I.No.11.02 P.No.	Cum	41.690	0.000	0.000	-	-
5	Providing and laying Cast in situ/Ready Mix cement concrete in M15 of trap/ granite/quartzite/gneiss metal for bed blocks, foundation blocks and such other items including bailing out water, Steel centering, formwork, laying/ pumping, compacting, roughening them if special finish is to be provided, finishing uneven and honeycombed surface and curing etc. complete. The Cement Mortar 1:3 plaster is considered for rendering uneven and honeycombed surface only. Newly laid concrete shall be covered by gunny bag, plastic, tarpaulin etc. (Wooden centering will not be allowed.), with fully automatic micro processor based PLC with SCADA enabled reversible Drum Type mixer/ concrete Batch mix plant (Pan mixer) etc. complete. With fine aggregate (Crushed sand VSI Grade) Sepc. No. Bd.E.4 Page Number 289 and B7, Page Number38. SSR I.No. 24.08, Sr.No. 830, P.176	Cum	11.230	0.000	0.000	-	-
6	Providing and laying in situ/ Ready Mix cement concrete M-20 of trap / granite / quartzite/ gneiss metal for R.C.C. work in foundations like raft , strip SSR I.No.25.11 P.No.180	Cum	31.020	0.000	0.000	-	-
7	Providing and laying Cast in situ/ Ready Mix cement concrete M-20 of trap / granite/ quartzite/ gneiss metal for R.C.C. columns as per detailed designs and SSR I.No.25.31 P.No.183						
	Ground Floor	Cum	7.070	0.000	0.000	-	-

8	Providing and laying Cast in situ/ Ready Mix cement concrete M-20 of trap/ granite/ quartzite/ gneiss metal for R.C.C. beams and lintels as per detailed SSR I.No.25.50 P.No.186						
	Ground Floor	Cum	9.900	0.000	0.000	-	-
12	Providing second class Burnt Brick masonry with conventional/ I.S. type bricks in cement mortar 1:6 in foundations and plinth of inner walls/ in plinth external walls including bailing out water manually , striking joints on unexposed faces, raking out joints on exposed faces and watering etc. Complete. Spec. No. As director by engineer in charge and BDG- 2 and 5. SSR I.No.27.01, Sr.No.889 P.No.197	Cum	5.350	0.000	0.000	-	-
13	Providing sand faced plaster externally in cement mortar using approved screened sand, in all positions including base coat of SSR I.No.32.11, Sr.No.1131 P.No.222						
	Ground Floor	Sqm	59.22	0.0000	0.000	-	-
		TOTAL QTY.			0.00		109.86
		RATE OF ROYALTY			237.37		216.18
		ROYALTY AMOUNT			0.00		23750.00

TOTAL QTY. 109.86  
TOTAL AMOUNT 23750.000



*[Signature]*

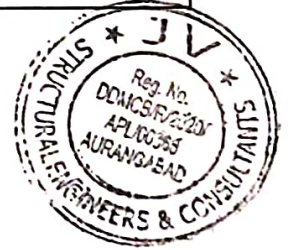
JV STRUCTURAL  
ENGINEERS AND CONSULTANT  
AURANGABAD

Name of Work :- Construction of Vegetable Storage /Sorting /Grading for Parashara  
Krishi Farmer Producer Company Ltd. at Tq. Phulambri, Dist. Aurangabad.

**LEAD CHART**

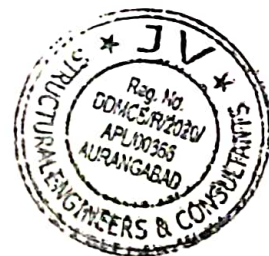
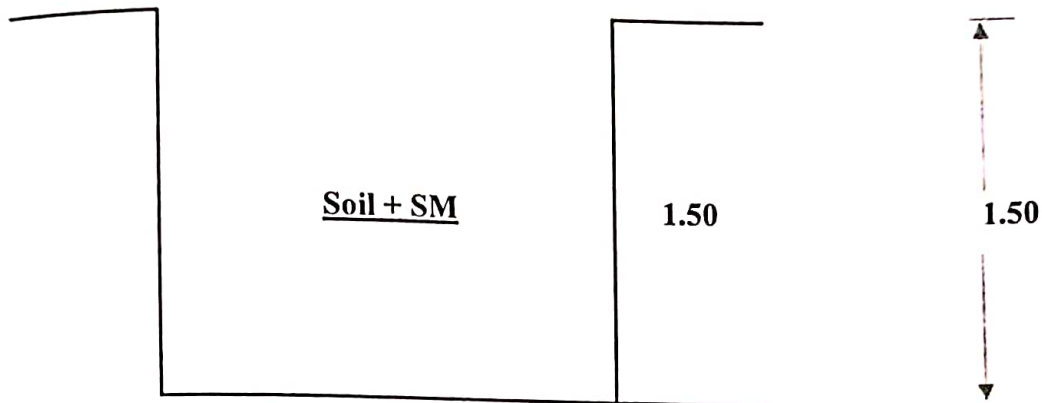
Sr.N	Material	Total Lead in km	Pay Load Factor	Rate per Trip	Net Lead Charges/Trip	Remarks
1	Stone/Rubble	17.00	4.70	2540.48	540.53	Sawangi Quarry
2	60 mm & 40 mm metal	17.00	6.00	2540.48	423.41	Sawangi Quarry
3	Metal Below 40 mm	17.00	5.75	2540.48	441.82	Sawangi Quarry
4	Bricks	22.00	3.105	3741.72 1 brick	1.210 1205.060	Jatwada Village
5	Sand	11.00	5.75	2062.68	358.73	Girija River
6	Murum	3.00	6.00	1319.89	219.98	Local
7	Cement	3.00	10.00	1354.64	135.46	Phulambri
8	Steel	3.00	10.00	1354.64	135.46	Phulambri

**JV STRUCTURAL  
ENGINEERS AND CONSULTANT  
AURANGABAD**



Name of Work :- Construction of Vegetable Storage /Sorting /Grading for Parashara  
Krishi Farmer Producer Company Ltd. at Tq. Phulambri, Dist. Aurangabad.

**TRIAL PIT FOR FOUNDATION**



**JV STRUCTURAL  
ENGINEERS AND CONSULTANT  
AURANGABAD**

LAYOUT PLAN

WEST  
70.10

38.89

9.00M W I D E R O A D

VEGETABLE DEHYDRATION  
PROCESS PLANT  
29.54 X 44.54 M

45.00

30.00

9.00M W I D E R O A D

NORTH

62.01

WEIGHT BRIDGE

W.C. OFFICE CABIN

SOUTH

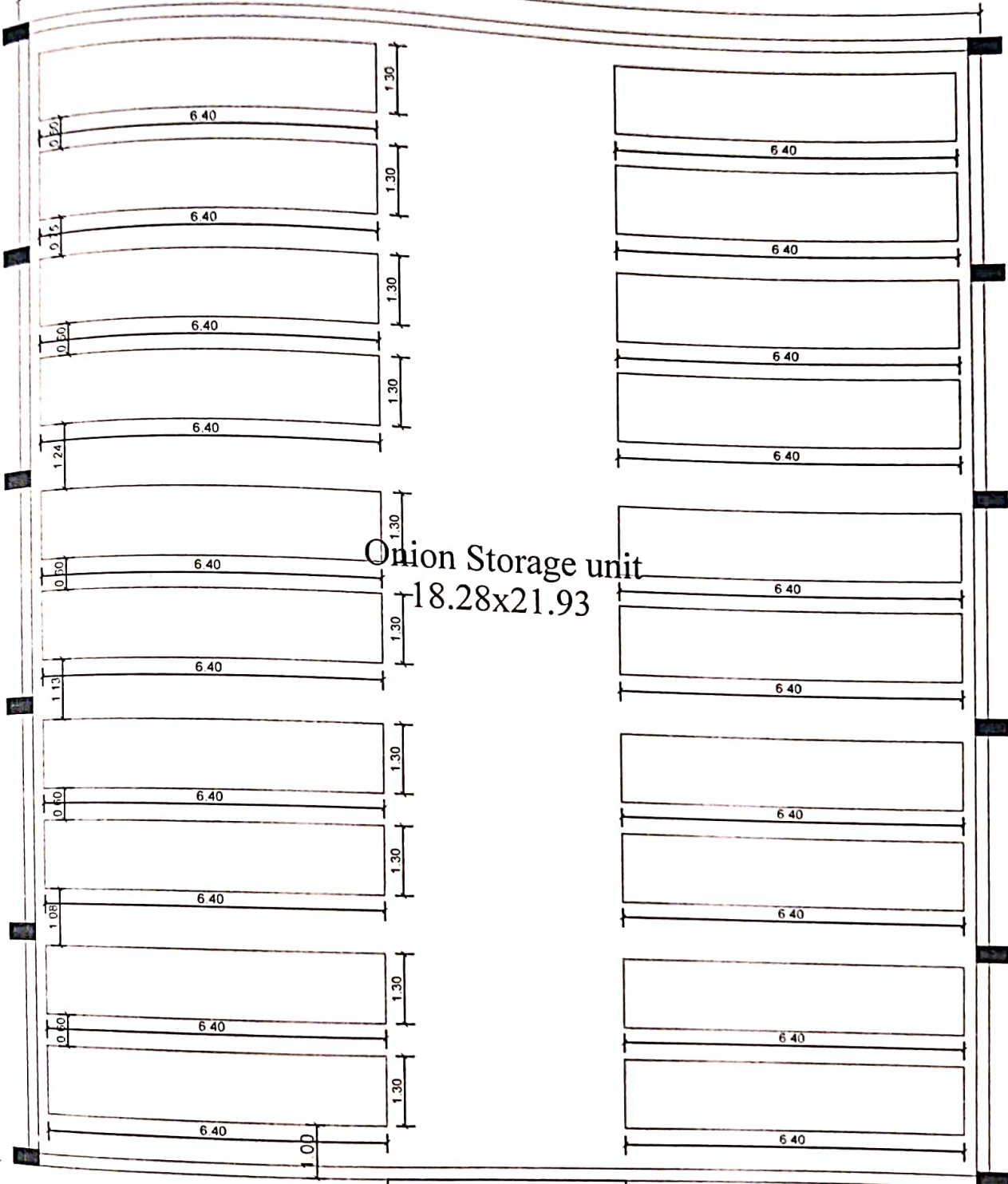
DEVGIRI TO NIGDHONA ROAD

EAST

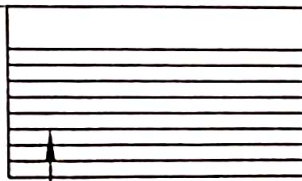


LAYOUT  
J.V. Srinivasan  
Professional Engineer  
No. 1000  
State of Karnataka  
India

18.29



Onion Storage unit  
18.28x21.93



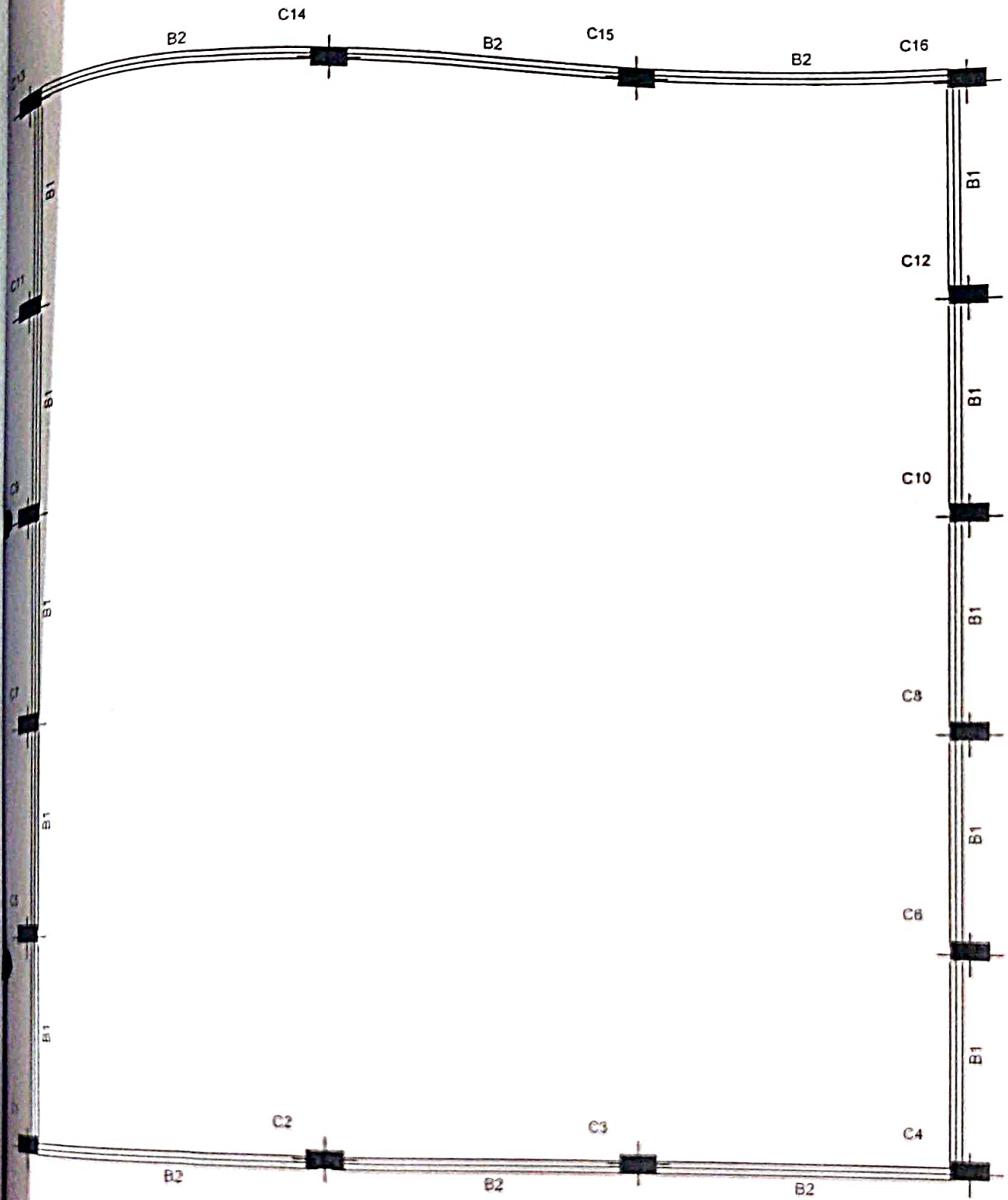
up

PLAN  
Onion Storage unit  
and gut no.38 part



*J.V.*

21.84



PLINTH LEVEL RCC PLAN



**PLINTH LEVEL RCC PLAN**

DESIGNED BY: J.V. Jeyaraj, CIVIL ENGINEER, AURANGABAD

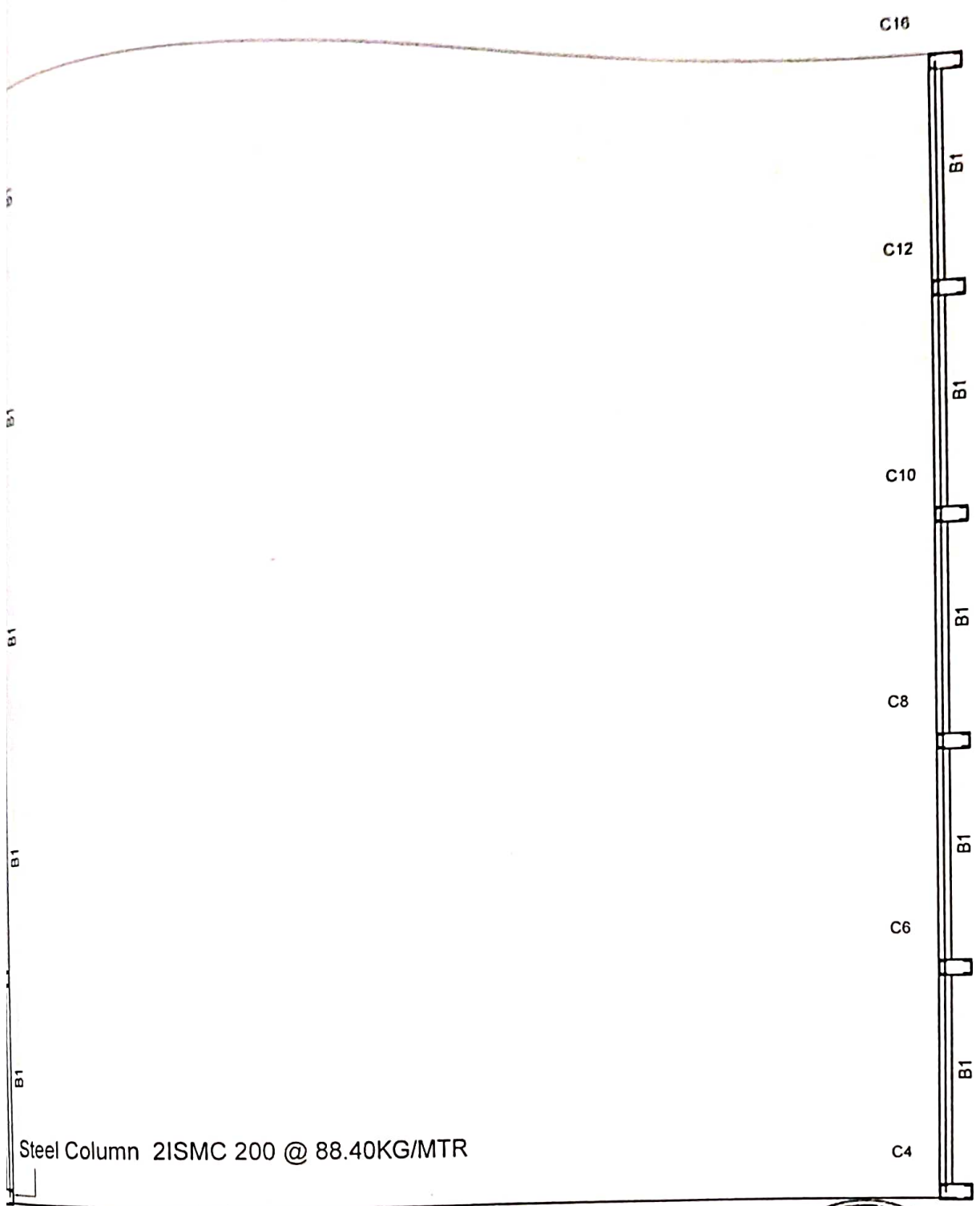
DATE: 10/10/2020

PROJECT: ONION SHED

SCALE: 1/4

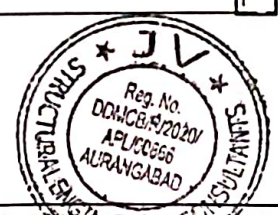
IV Jeyaraj & Co. Engineers

BEAMS AT GL/PL LEVEL	
B1	- 230 X 450
B2	- 230 X 750




Steel Column 2ISMC 200 @ 88.40KG/MTR

TRUSS BOTTOM PLAN

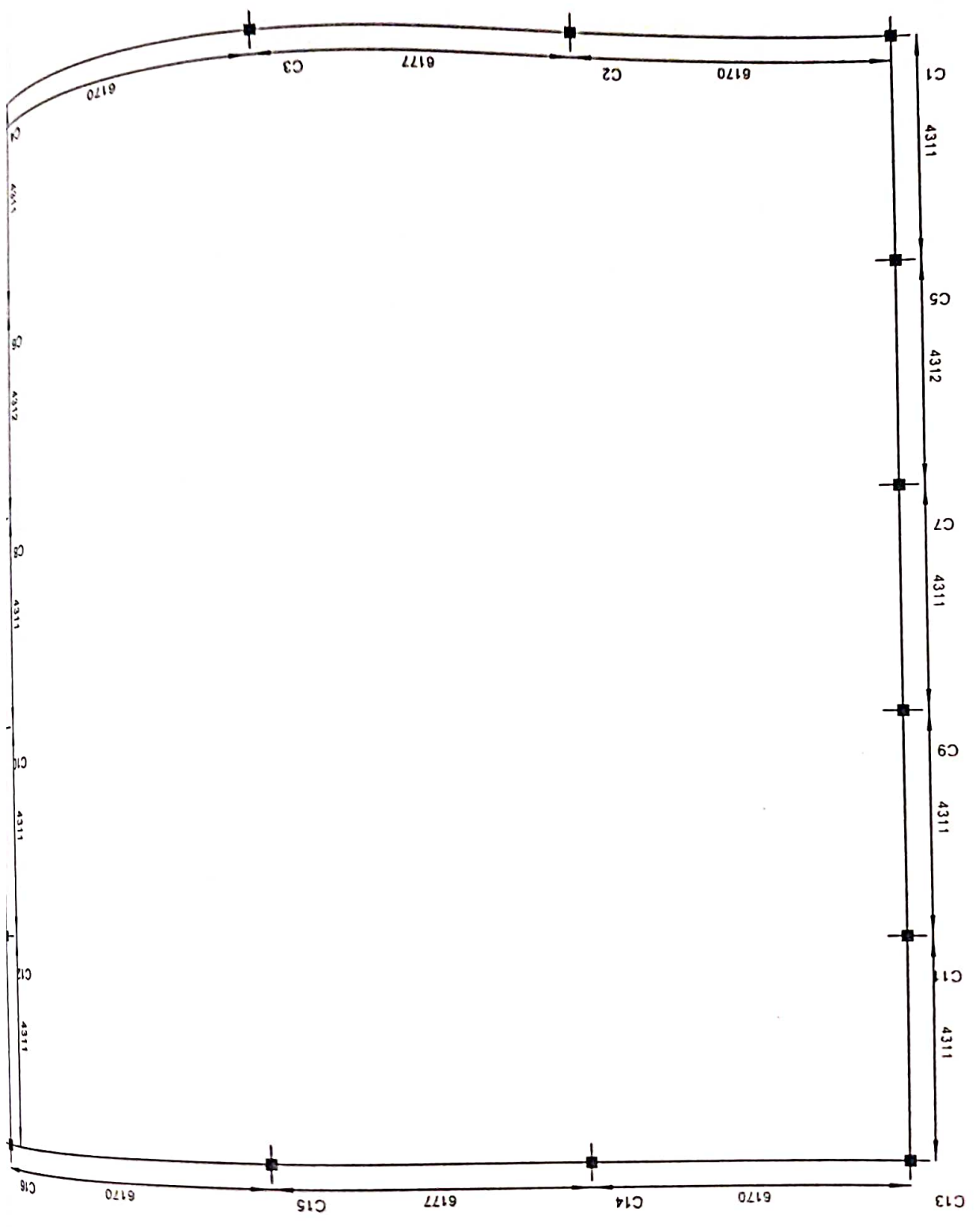


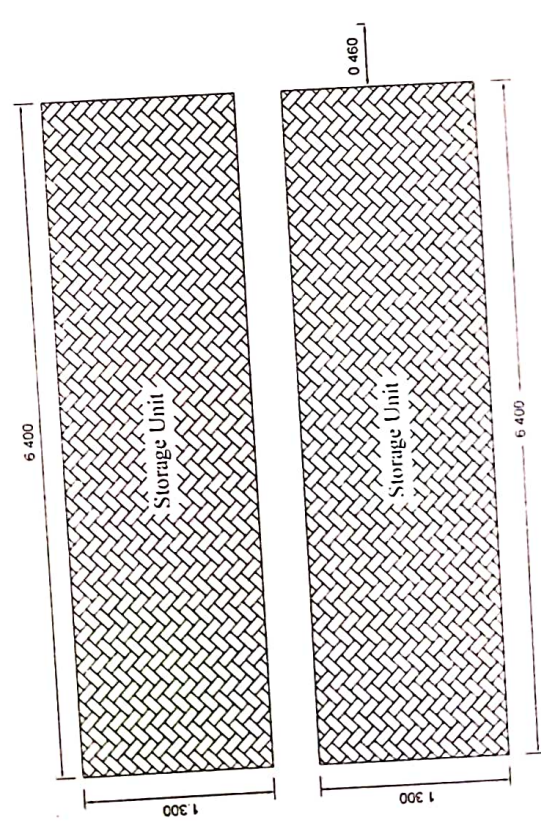
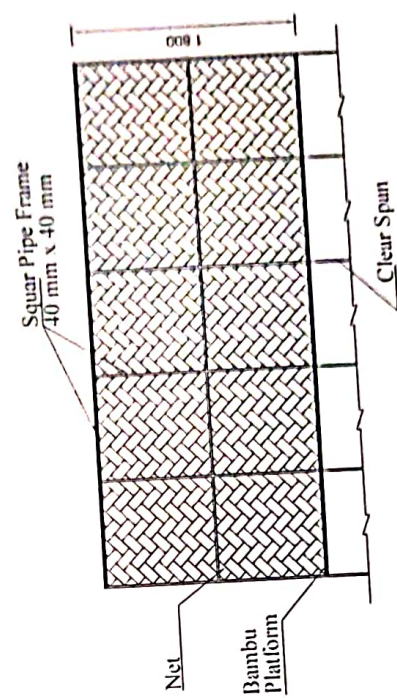
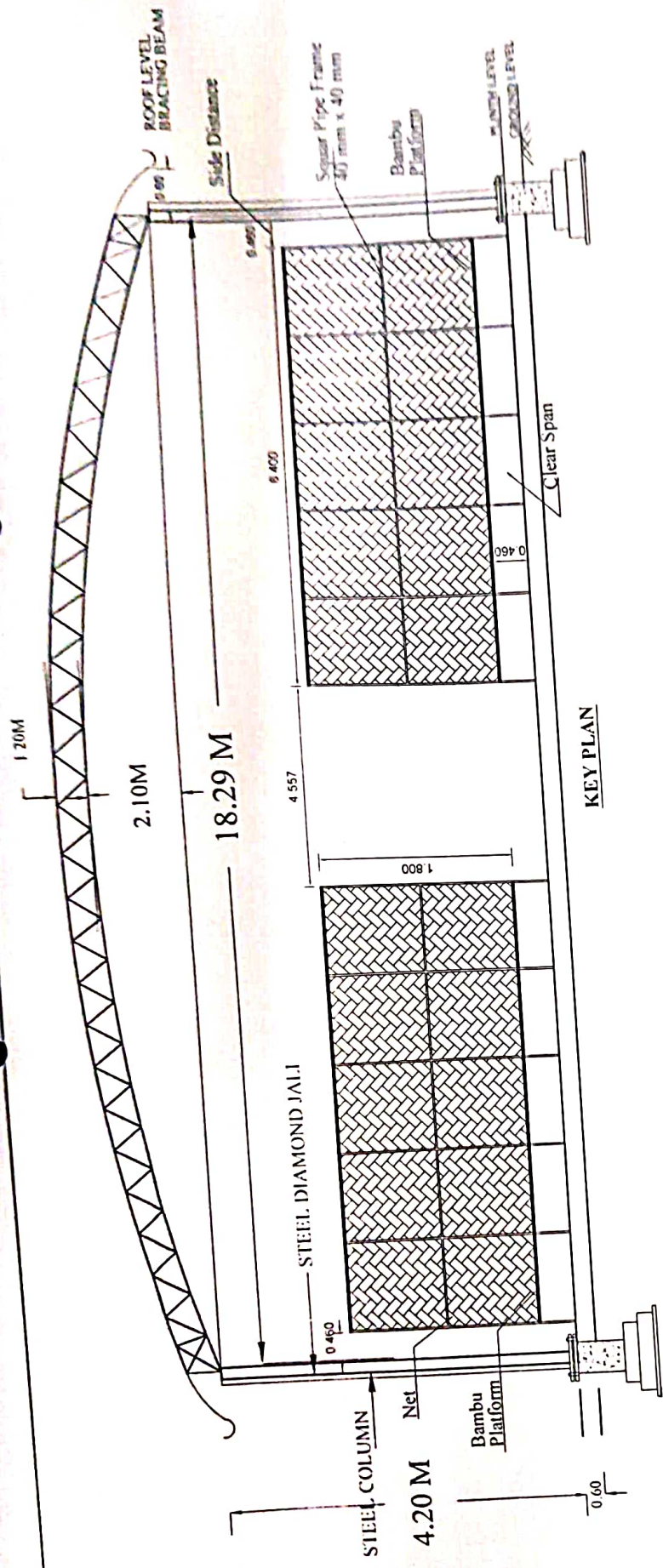
BEAMS AT TRUSS BOTTOM LEVEL	
B1	ISMC 200 @
22.10KG/MTR	

<b>TRUSS BOTTOM PLAN</b>	
NAME OF WORK: CONSTRUCTION OF VEGETABLE STORAGE SORTING/GRADING FOR PARASHARA KRISHI FARMER PRODUCER COMPANY LTD AT TO PHULAMBRI DISTRICT AURANGABAD	
STRUCTURAL DESIGN BY	<i>[Signature]</i>
	<b>JV Structural Engineers &amp; Consultants</b> <small>100/11, 1st Floor, P. No. 1, Near, Phulambri, Dist. Aurangabad, Maharashtra - 431001, India. Phone: 9420028563, 9678217100. E-mail: jvengr@rediffmail.com</small>

*[Handwritten signature]*

BEAM CENTER LINE





*[Handwritten signature]*